

A UNITED STATES
DEPARTMENT OF
COMMERCE
PUBLICATION



NBS TECHNICAL NOTE 395

U.S.
DEPARTMENT
OF
COMMERCE

National
Bureau
of Standards

Design
for a Variable-Output-Coupling
Far-Infrared Michelson Laser

NBS TECHNICAL PUBLICATIONS

PERIODICALS

JOURNAL OF RESEARCH reports National Bureau of Standards research and development in physics, mathematics, chemistry, and engineering. Comprehensive scientific papers give complete details of the work, including laboratory data, experimental procedures, and theoretical and mathematical analyses. Illustrated with photographs, drawings, and charts.

Published in three sections, available separately:

● Physics and Chemistry

Papers of interest primarily to scientists working in these fields. This section covers a broad range of physical and chemical research, with major emphasis on standards of physical measurement, fundamental constants, and properties of matter. Issued six times a year. Annual subscription: Domestic, \$9.50; foreign, \$11.75*.

● Mathematical Sciences

Studies and compilations designed mainly for the mathematician and theoretical physicist. Topics in mathematical statistics, theory of experiment design, numerical analysis, theoretical physics and chemistry, logical design and programming of computers and computer systems. Short numerical tables. Issued quarterly. Annual subscription: Domestic, \$5.00; foreign, \$6.25*.

● Engineering and Instrumentation

Reporting results of interest chiefly to the engineer and the applied scientist. This section includes many of the new developments in instrumentation resulting from the Bureau's work in physical measurement, data processing, and development of test methods. It will also cover some of the work in acoustics, applied mechanics, building research, and cryogenic engineering. Issued quarterly. Annual subscription: Domestic, \$5.00; foreign, \$6.25*.

TECHNICAL NEWS BULLETIN

The best single source of information concerning the Bureau's research, developmental, cooperative, and publication activities, this monthly publication is designed for the industry-oriented individual whose daily work involves intimate contact with scientific and technology—for engineers, scientists, and technical research managers, product designers, and company executives. Annual subscription: Domestic, \$3.00; foreign, \$4.00*.

NONPERIODICALS

Applied Mathematics Series. Mathematical tables, manuals, and studies.

Building Science Series. Research results, test methods, and performance criteria of building materials, components, systems, and structures.

Handbooks. Recommended codes of engineering and industrial practice (including safety codes) developed in cooperation with interested industries, professional organizations, and regulatory bodies.

Special Publications. Proceedings of NBS conferences, bibliographies, annual reports, wall charts, pamphlets, etc.

Monographs. Major contributions to the technical literature on various subjects related to the Bureau's scientific and technical activities.

National Standard Reference Data Series. NSRDS provides quantitative data on the physical and chemical properties of materials, compiled from the world's literature and critically evaluated.

Product Standards. Provide requirements for sizes, types, quality and methods for testing various industrial products. These standards are developed cooperatively with interested Government and industry groups and provide the basis for common understanding of product characteristics for both buyers and sellers. Their use is voluntary.

Technical Notes. This series consists of communications and reports (covering both other agency and NBS-sponsored work) of limited or transitory interest.

Federal Information Processing Standards Publications. This series is the official publication within the Federal Government for information on standards adopted and promulgated under the Public Law 89-306, and Bureau of the Budget Circular A-86 entitled, Standardization of Data Elements and Codes in Data Systems.

CLEARINGHOUSE

The Clearinghouse for Federal Scientific and Technical Information, operated by NBS, supplies unclassified information related to Government-generated science and technology in defense, space, energy, and other national programs. For information on Clearinghouse services, write:

Clearinghouse
U.S. Department of Commerce
Springfield, Virginia 22151

UNITED STATES DEPARTMENT OF COMMERCE
Maurice H. Stans, Secretary
NATIONAL BUREAU OF STANDARDS • Lewis M. Branscomb, Director



TECHNICAL NOTE 395

ISSUED JANUARY 1971

Nat. Bur. Stand. (U.S.), Tech. Note 395, 23 pages (Jan. 1971)

CODEN: NBTNA

Design for a Variable-Output-Coupling Far-Infrared Michelson Laser

J. S. Wells, K. M. Evenson, L. M. Matarrese,
D. A. Jennings, and G. L. Wichman

Quantum Electronics Division
Institute for Basic Standards
National Bureau of Standards
Boulder, Colorado 80302



NBS Technical Notes are designed to supplement the Bureau's regular publications program. They provide a means for making available scientific data that are of transient or limited interest. Technical Notes may be listed or referred to in the open literature.

For sale by the Superintendent of Documents, U.S. Government Printing Office, Washington, D.C. 20402
(Order by SD Catalog No. C13.46:395), Price 50 cents.

advantages are: (1) Diffraction losses are kept to a minimum because the full internal beam diameter is utilized. (2) Mode distortion is minimized. (3) The coupling may be continuously adjusted from zero to four times that of a simple beam splitter. (4) The output coupling is easily varied. (5) Line identification is simplified, as will be explained in a later part of the note. (6) The output beam is linearly polarized, a useful feature in some applications, such as in coupling to the whisker diodes used in frequency measurements.⁽³⁾ (7) Finally, the device is relatively easy and inexpensive to build.

Figure 1 shows the design we have successfully employed for H₂O and HCN lasers operating from 28 to 373 μ m. The flat mirrors A and B can be translated by micrometer heads with a resolution of about 0.2 μ m. Mirror B serves to tune the resonator B-C. Mirror A varies the power coupled out of the polyethylene lens (the lens may be replaced by a flat window if a focused beam is not desired,) by varying the relative phase of the waves returning to the beam splitter from mirrors A and B. Since resonator AC has such a low Q, frequency pulling by AC is negligible. The dielectric beam splitter, which is set at an angle of 45^o to the laser tube axis, is a taut polyethylene or polypropylene membrane of such a thickness that provides constructive interference of the beams reflected from each of its surfaces. This thickness is an odd multiple of

$$t = 1/4 \lambda_0 (n^2 - 1/2)^{-1/2}, \quad (1)$$

where λ_0 is the vacuum wavelength of the laser radiation, and n is the refractive index of the beam splitter material (about 1.5). For example, our HCN laser ($\lambda_0 = 337 \mu\text{m} = 13.3 \text{ mil}$) has a membrane 2.5 mil thick. The H_2O laser ($\lambda_0 = 28 \mu\text{m} = 1.1 \text{ mil}$) uses a membrane approximately 0.6 mil thick, which is about 3 times the value given by Eq. (1), since we were unable to obtain thinner polyethylene or polypropylene film of suitable quality.

As an example of the operation of the coupling control, we show in figure 2 recorder traces of the power coupled out of an HCN laser ($337 \mu\text{m}$) as function of displacement of mirror A, with laser tube current as parameter. When the two waves recombining on the beam splitter are 180° out of phase, there is practically complete cancellation of the output at current setting. Halfway between, where constructive interference is at a maximum, the laser is actually overcoupled, a desirable condition since one is then sure of obtaining maximum laser output at some intermediate setting of mirror A. If the laser gain is not high enough, there will be no oscillation in the overcoupled region. This is seen in figure 2 at laser currents of less than 0.2A, and is the normal situation with the 78- and 118- μm lines of the H_2O laser. (The water vapor laser only lases on the 28 μm line unless the three

mirrors are all precisely aligned.) The table shows the powers we have been able to obtain from various lasers using this coupling method.

The side mirror has also proved useful in simplifying line identification. With mirror B fixed, one need only measure the translation of mirror A from one 180° phase point to the next as on figure 2.

The power relectivity of the film at these wavelengths is about 4% so that the maximum fraction of power coupled out of the laser is about 16%. This can be increased even more, if the laser gain permits, by using a compound beam splitter, - that is two parallel membranes with the appropriate interspace between them.

A disadvantage of this scheme which we have noticed is the tendency for drumhead resonances to appear in the membrane if the plasma current is modulated. These can be eliminated, but at a sacrifice of output power, by using a much thicker membrane.

Construction notes and detailed drawings comprise the remainder of this note.

The vacuum seals involve O-rings which have been lightly greased. The laser tube has O-rings clamped between a flat surface and a 45° chamfered surface which causes a seal between the O-ring and the glass and at the same time allows the glass to slide as it heats

and expands in length. A similar detail allows the micrometer rods to pass thru on O-ring seal. The cathode and anode seals contact O-rings which rest on a 30 mm flared section of glass with differential pressure performing the previous function of the clamp. Other O-ring seals are in conventional grooves.

Epoxy is used to provide a seal at the interface of a ground glass donut and the curved mirror, C. Epoxy (or type W black wax of the low pressure variety) is also used to fasten the mirrors A and B to aluminum mounting disks which are attached to coupling rods to the micrometers.

Pairs of ball bushings (supporting the rods to which hold the mirrors) were quite effective in insuring proper translation of the mirrors. Two ball bushings were needed to overcome the changing torque and resulting mirror tipping as the relatively massive mirror was moved axially.

The beam splitter polyethylene is kitchen variety wrapping material. Typically this material will have dents and imperfections when taken from the container. Our technique is to stretch this tightly and attach it to a frame with two-sided adhesive tape, then heat it slightly with a hot air gun until the dents and imperfections disappear. It is then attached to the beam splitter frame with rubber cement.

The laser is aligned by tightening screws which compress the O-rings separating the laser proper from supports for the mirrors. Once the laser is aligned optically, three reference screws are tightened and used as stops for automatic alignment after subsequent laser disassembly and reassembly.

The water cooled cathodes are constructed almost entirely from standard copper plumbing items; the lone exception is the item into which the 1/4" water lines feed. A standard quick connect makes the water seal at the upper end. This permits one to change the insert (consisting of the inner pipe with the reducer hard soldered to it) by merely changing one soft solder joint and redoing it. Under certain discharge conditions, an electron beam from the cathode has melted a hole in the glass. This possibility has been eliminated by placing a semicircular stainless steel insert about 3cm. long below the cathode.

We have found the following alignment procedure to be very useful:

1. Align the end mirrors B and C with a 6328 Å laser or sighting down the bore and use the reference screws to precisely reposition the first mirror aligned. If mirror C is aligned first, mirror A may be aligned at the same time as mirror B by causing reflected laser light from mirror A to be superposed on that from B

and the beam splitter at some distance from the laser. Mirror C is then accurately repositioned by the reference screws.

2. With the laser oscillating on the $337\mu\text{m}$ line for HCN or $28\mu\text{m}$ line for the H_2O laser, mirrors B and C are alternately slightly readjusted until the output power is maximized.

3. Liquid crystal is positioned at the focal point of the polyethylene lens for the final adjustment. Mirror A is adjusted until beams from mirrors A and B are superposed as evidenced by a single spot rather than two on the liquid crystal. Another manifestation of this alignment is the absence of interference fringes on the liquid crystal when it is held next to the polyethylene lens rather than at its focal point. After this step is completed, a detector is placed at the focal point and mirror A is very finely aligned to give the maximum fluctuation in the output signal as mirror A is translated. The laser then should be properly aligned.

We would like to thank V. Lecinski for the fine draftsmanship and K. Gebert for his contributions regarding the cathode construction.

Table: Powers available from H₂O and HCN Michelson Lasers. The lasers were 8 meters long and of folded confocal geometry. The power was measured with an "aquadag" blackened copper cone calorimeter.

Laser	λ	Inside Diameter	Power	Gas Mixtures
HCN	337 μm	133 mm	150 mW*	Ammonia and methane
HCN	311 μm	133 mm	50 mW*	"
H ₂ O	118 μm	75 mm	20 mW	H ₂ O vapor and hydrogen
H ₂ O	79 μm	75 mm	15 mW	"
H ₂ O	78 μm	75 mm	40 mW	"
H ₂ O	28 μm	37 mm	450 mW (Multimode)	"

* The HCN laser discharge was adjusted for maximum spectral purity and not maximum gain. Good spectral purity is evidenced by stationary striations in the methane and ammonia discharge.

REFERENCES

1. J. E. Chamberlain, et. al. *Infrared Physics* 6, 195 (1966)
2. P. W. Smith, *IEEE J. Quantum Electronics*, QE1, 343 (1965)
3. K. M. Evenson, J. S. Wells and L. M. Matarrese, *Appl. Phys. Letters*, 16, 251 (1970).
4. Born and Wolf, Principles of Optics, Pergamon Press (1959)
p. 281

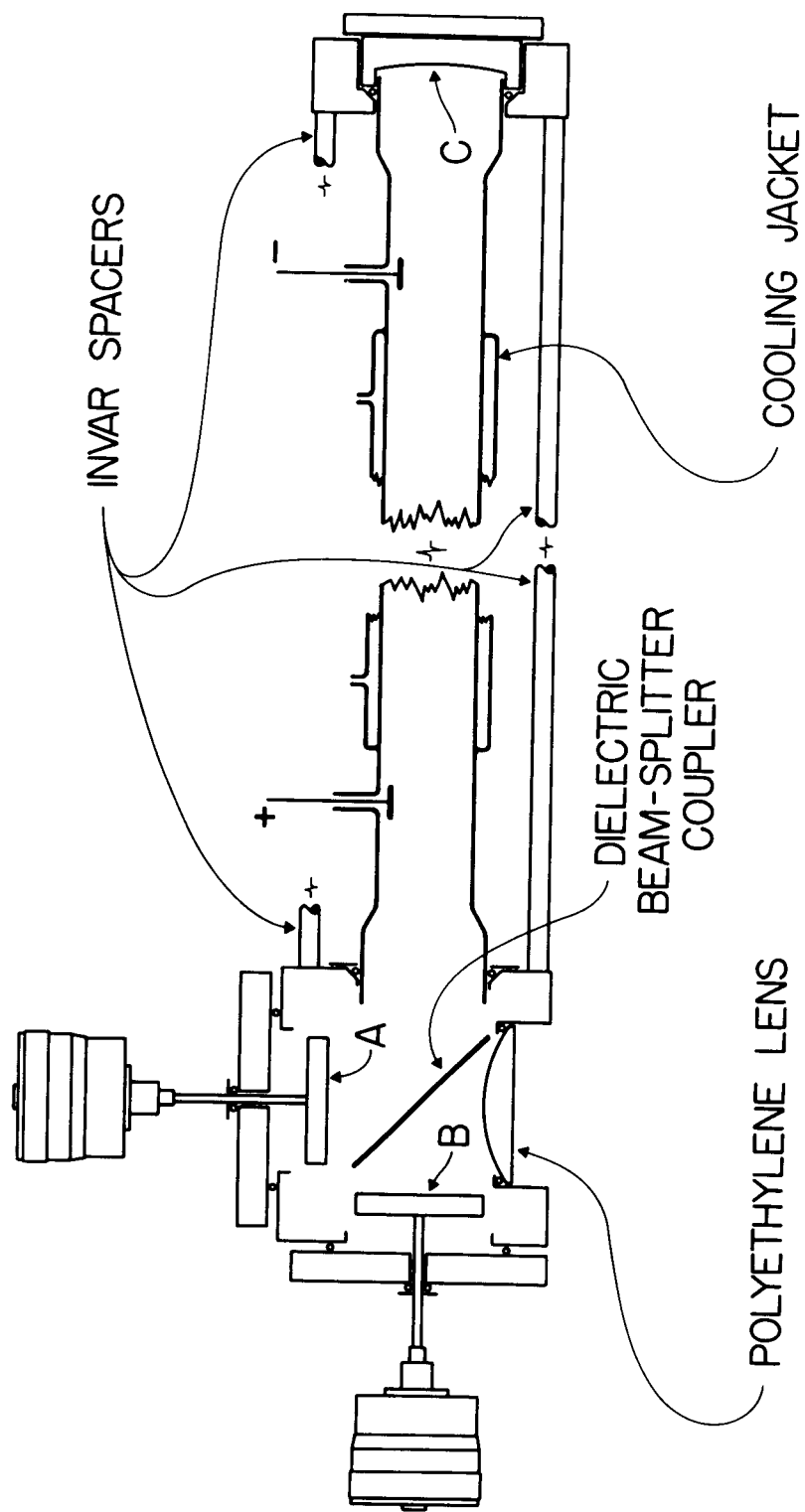


Figure 1. Schematic drawing of HCN and H₂O variable coupling far infrared laser. The HCN Laser does not have a cooling jacket.

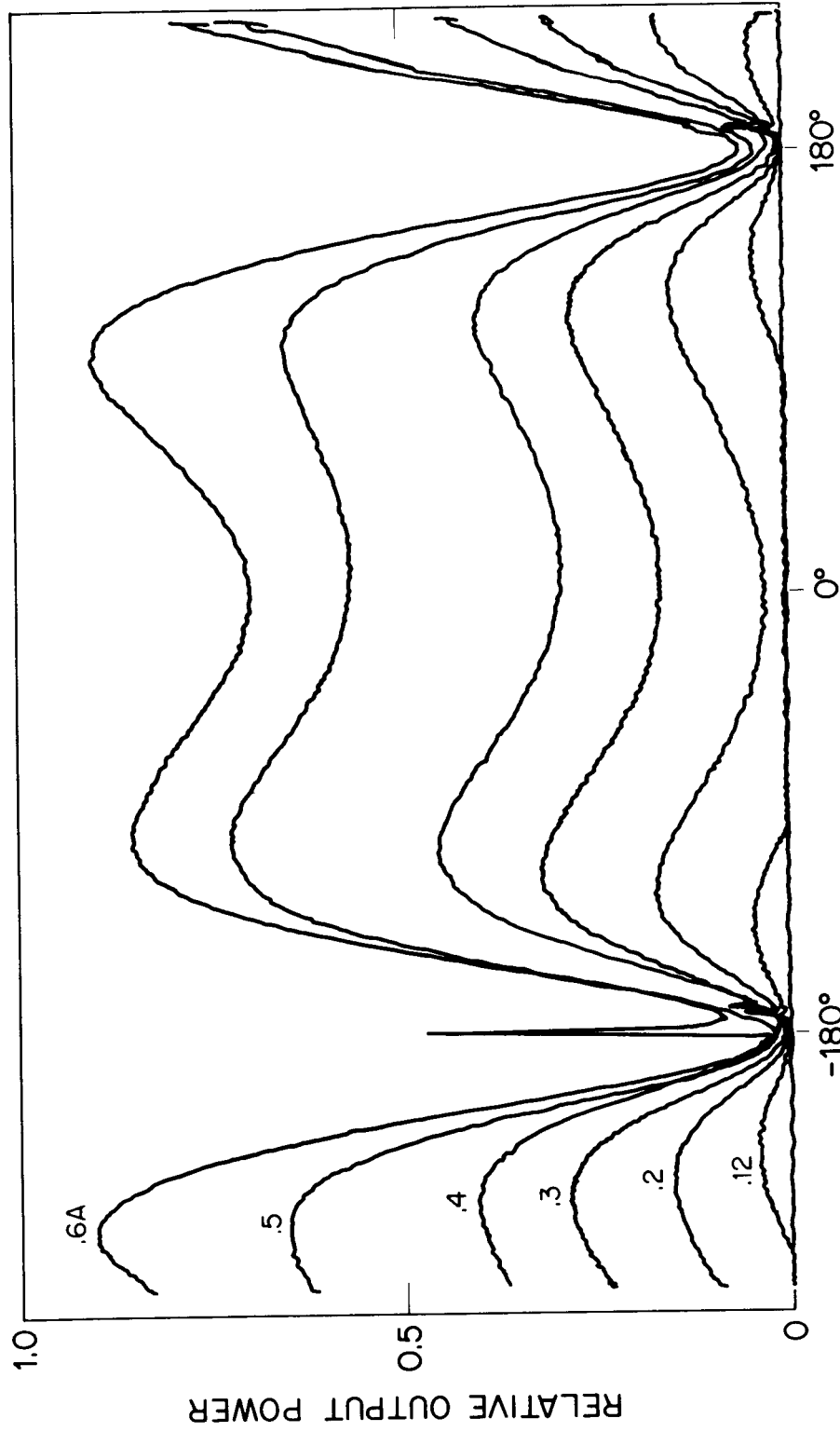
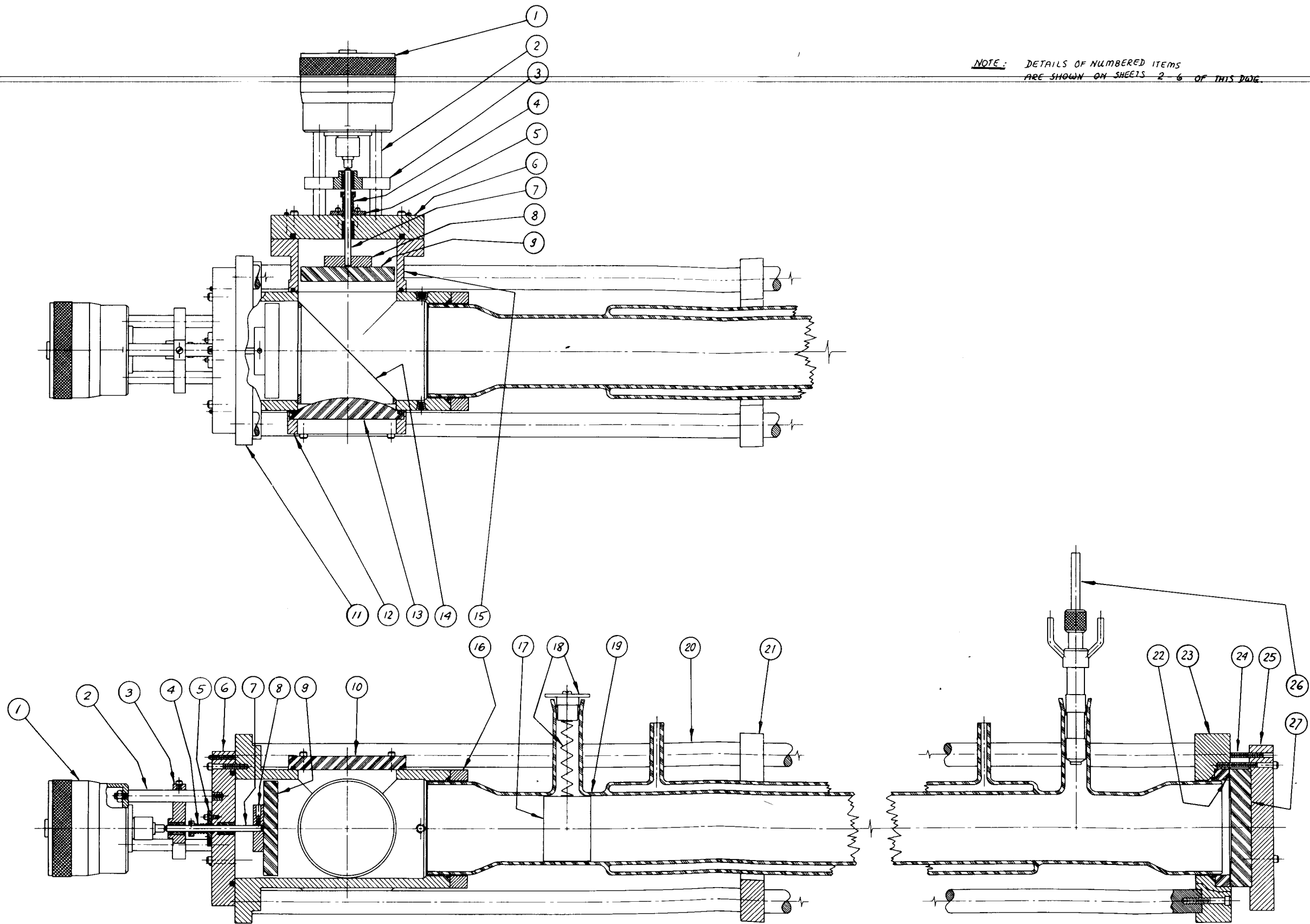


Figure 2. Recorder traces of power coupled out of an HCN laser ($337\mu\text{m}$) by the device of figure 1 as a function of the relative phase of the waves reflected from mirrors A and B. The parameter is laser tube current. A power meter was connected to the Y-axis of the recorder, and a transducer giving a signal proportional to the displacement of mirror A, to the X-axis. The transient spikes appearing at the 180° positions are caused by mode jumping in the laser.

ORIGINAL DATE OF DRAWING		
REVISIONS		
NO	DATE	CHANGE

NOTE: DETAILS OF NUMBERED ITEMS ARE SHOWN ON SHEETS 2-6 OF THIS DRAWING.



LIST OF STOCK PARTS

O-RING PARKER No. 2-118	2
O-RING PARKER No. 2-349	2
O-RING PARKER No. 2-344	2
O-RING PARKER No. 2-246	1
O-RING PARKER No. 2-245	1
O-RING PARKER No. 2-10	2
STEEL SET SCREW #8-32 UNC 1 1/2" LONG (SPECIAL), FLAT POINT	3
STEEL SCREW #10-32 UNF HEX. SOCKET HEAD, 2 1/4" LONG	3
BRASS SCREW #10-32 UNF ROUND HEAD, 1/2" LONG (FOR ANGLE)	1
STEEL SET SCREW #6-32 UNC 3/8" LONG, FLAT POINT	2
STEEL SCREW #10-32 UNF HEX. SOCKET HEAD, 1" LONG	8
STEEL STLD SCREW #4-20 UNC 1 3/8" LONG	4
STEEL SCREW #4-20 UNC HEX. SOCKET HEAD, 1 1/2" LONG	8
STEEL SET SCREW #8-32 UNC 1" LONG, FLAT POINT	6
STEEL SCREW #10-32 UNF HEX. SOCKET HEAD, 1 3/4" LONG	10
BRASS SCREW #6-32 UNC FILLISTER HEAD, 3/4" LONG	6
STEEL SPLIT SHAFT CLAMP (.250 I.D.)	2
NYLON SCREW #6-32 UNC FILLISTER HEAD, 3/4" LONG	6
BALL BUSHING (.250 I.D.) CAT. No. A-4812 (THOMSON)	4
MICROMETER, LS STARRETT #469 MH (METRIC) RANGE: 0-25mm	2
BRASS OR STEEL HEX. NUT 1/4-28 UNF	6

NOMENCLATURE

NATIONAL BUREAU OF STANDARDS
QUANTUM ELECTRONICS DIV., BOULDER, COLO. 80502

ASSEMBLY

FOR MICHELSON LASER CAVITY

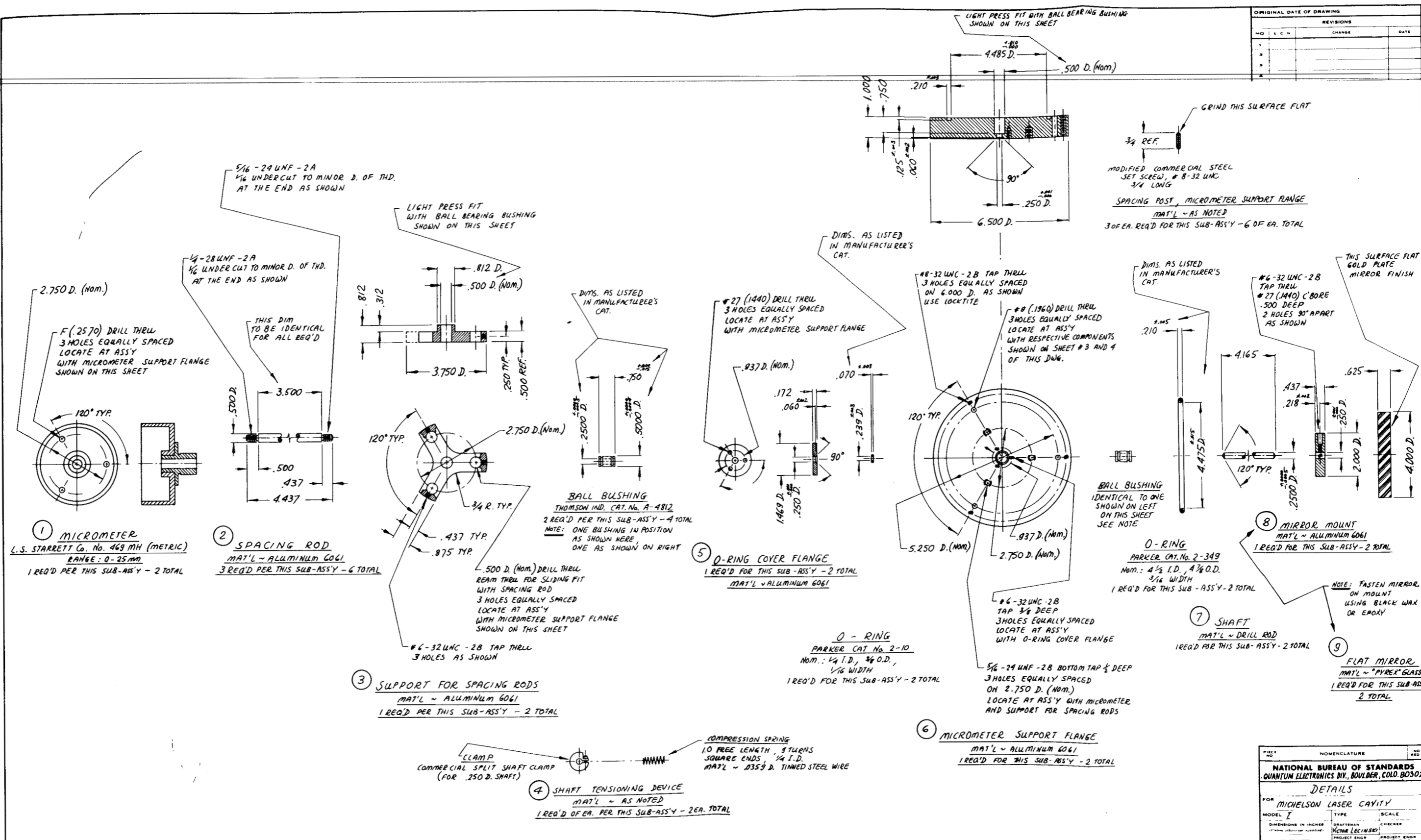
MODEL J	TYPE	SCALE
DIMENSIONS IN INCHES	DRAWN BY	CHECKER
TOLERANCES	ACTOR LECHEK	PROJECT ENGR
DECIMALS .005	PROJECT ENGR	PROJECT ENGR
FRACTIONS .015	PROJECT ENGR	PROJECT ENGR
ANGLES 1/2	PROJECT ENGR	PROJECT ENGR
DO NOT SCALE THIS PRINT	PROJECT ENGR	PROJECT ENGR
DIV. SEC.	PROJECT ENGR	PROJECT ENGR
THIS PRINT ISSUED	PROJECT ENGR	PROJECT ENGR

APPROVED BY: **M.K. EVENSON DR. J.S. WELLS**

DATE: **4-1/343 D**

SHEET 1 OF 6

ORIGINAL DATE OF DRAWING		
NO	REV	DATE



① **MICROMETER**
L.S. STARRETT Co. No. 469 MH (METRIC)
RANGE: 0-25 MM
1 REQ'D PER THIS SUB-ASSY - 2 TOTAL

② **SPACING ROD**
MAT'L - ALUMINUM 6061
3 REQ'D PER THIS SUB-ASSY - 6 TOTAL

③ **SUPPORT FOR SPACING RODS**
MAT'L - ALUMINUM 6061
1 REQ'D PER THIS SUB-ASSY - 2 TOTAL

④ **SHAFT TENSIONING DEVICE**
MAT'L - AS NOTED
1 REQ'D OF EA. PER THIS SUB-ASSY - 2 EA. TOTAL

⑤ **O-RING COVER FLANGE**
1 REQ'D FOR THIS SUB-ASSY - 2 TOTAL
MAT'L - ALUMINUM 6061

O-RING
PARKER CAT. No. 2-10
Nom.: 1/4 I.D., 3/8 O.D.,
1/16 WIDTH
1 REQ'D FOR THIS SUB-ASSY - 2 TOTAL

⑥ **MICROMETER SUPPORT FLANGE**
MAT'L - ALUMINUM 6061
1 REQ'D FOR THIS SUB-ASSY - 2 TOTAL

⑦ **SHAFT**
MAT'L - DRILL ROD
1 REQ'D FOR THIS SUB-ASSY - 2 TOTAL

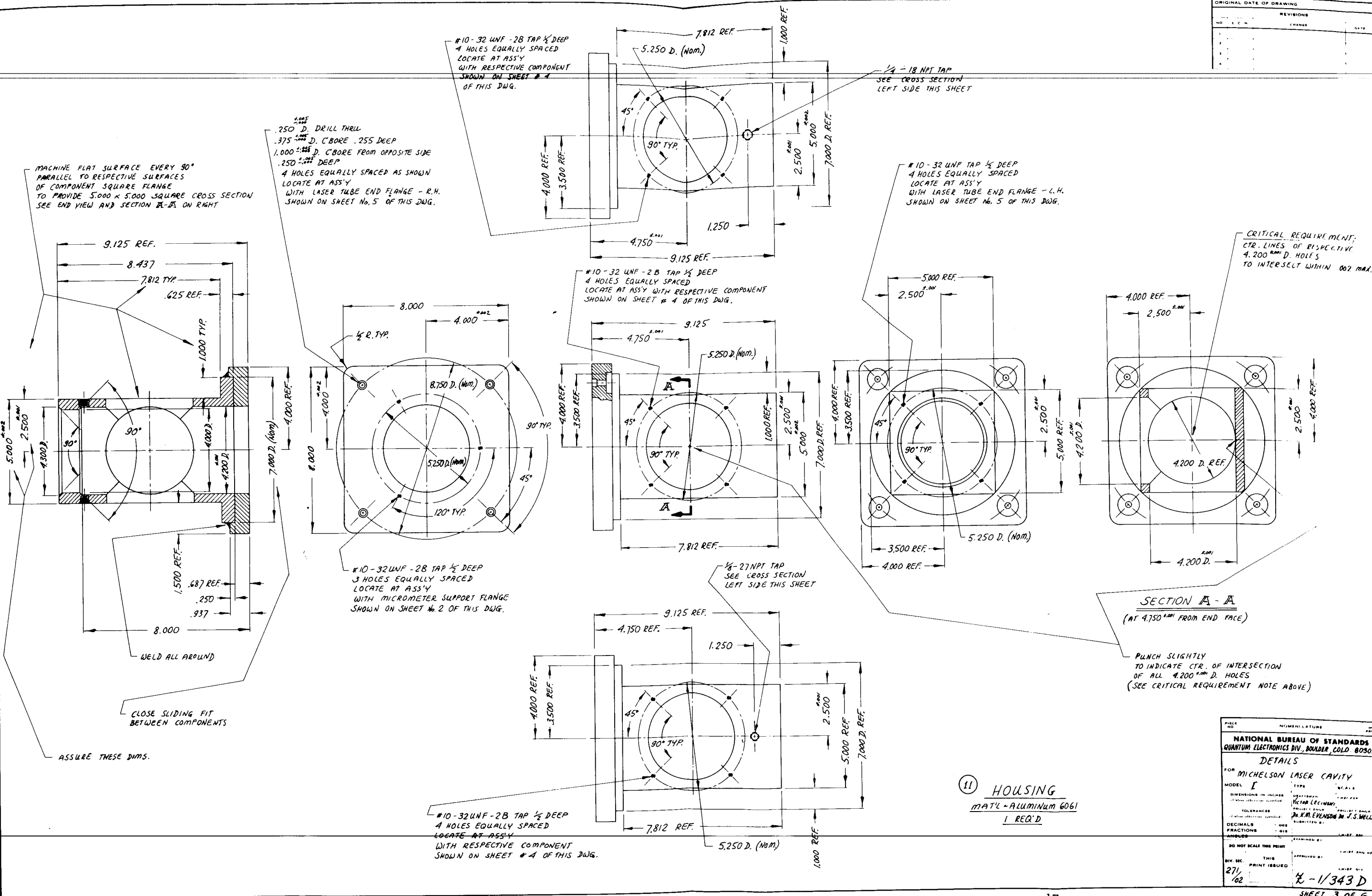
⑧ **MIRROR MOUNT**
MAT'L - ALUMINUM 6061
1 REQ'D FOR THIS SUB-ASSY - 2 TOTAL

⑨ **FLAT MIRROR**
MAT'L - "PYREX" GLASS
1 REQ'D FOR THIS SUB-ASSY
2 TOTAL

MOVEABLE MIRROR END SUB-ASSY
2 REQ'D
SCALE = 1/2

PIECE NO	NOMENCLATURE	NO REQ'D
NATIONAL BUREAU OF STANDARDS QUANTUM ELECTRONICS DIV., BOULDER, COLO. 80502		
DETAILS		
FOR MICHELSON LASER CAVITY		
MODEL I	TYPE	SCALE
DIMENSIONS IN INCHES	DRAWN BY	CHECKER
TOLERANCES	PROJECT ENGR	PROJECT ENGR
FRACTIONS	DECIMALS	DO NOT SCALE THIS PRINT
ANGLES	APPROVED BY	CHIEF ENGINEER
DIV. SEC	PRINT ISSUED	CHIEF DIV
271/02		L-1/343 D

ORIGINAL DATE OF DRAWING			
REVISIONS			
NO.	DATE	CHANGE	BY



MACHINE FLAT SURFACE EVERY 90° PARALLEL TO RESPECTIVE SURFACES OF COMPONENT SQUARE FLANGE TO PROVIDE 5.000 X 5.000 SQUARE CROSS SECTION SEE END VIEW AND SECTION A-A ON RIGHT

$\frac{1}{16}$ DRILL THRU
 $\frac{1}{16}$ D. DRILL THRU
 $\frac{1}{16}$ D. C BORE .255 DEEP
 $\frac{1}{16}$ D. C BORE .255 DEEP
 $\frac{1}{16}$ D. C BORE .255 DEEP
 4 HOLES EQUALLY SPACED AS SHOWN LOCATE AT ASS'Y WITH LASER TUBE END FLANGE - R.H. SHOWN ON SHEET No. 5 OF THIS DWG.

#10-32 UNF - 28 TAP $\frac{1}{2}$ DEEP
 4 HOLES EQUALLY SPACED
 LOCATE AT ASS'Y WITH RESPECTIVE COMPONENT SHOWN ON SHEET # 4 OF THIS DWG.

$\frac{1}{4}$ - 18 NPT TAP
 SEE CROSS SECTION LEFT SIDE THIS SHEET

#10-32 UNF TAP $\frac{1}{2}$ DEEP
 4 HOLES EQUALLY SPACED
 LOCATE AT ASS'Y WITH LASER TUBE END FLANGE - L.H. SHOWN ON SHEET No. 5 OF THIS DWG.

#10-32 UNF - 28 TAP $\frac{1}{2}$ DEEP
 4 HOLES EQUALLY SPACED
 LOCATE AT ASS'Y WITH RESPECTIVE COMPONENT SHOWN ON SHEET # 4 OF THIS DWG.

#10-32 UNF - 28 TAP $\frac{1}{2}$ DEEP
 3 HOLES EQUALLY SPACED
 LOCATE AT ASS'Y WITH MICROMETER SUPPORT FLANGE SHOWN ON SHEET No. 2 OF THIS DWG.

$\frac{1}{8}$ - 27 NPT TAP
 SEE CROSS SECTION LEFT SIDE THIS SHEET

#10-32 UNF - 28 TAP $\frac{1}{2}$ DEEP
 4 HOLES EQUALLY SPACED
 LOCATE AT ASS'Y WITH RESPECTIVE COMPONENT SHOWN ON SHEET # 4 OF THIS DWG.

CRITICAL REQUIREMENT:
 CTR. LINES OF RESPECTIVE
 4.200 \pm D. HOLES
 TO INTERSECT WITHIN .002 MAX.

SECTION A-A
 (AT 4.750 \pm FROM END FACE)

PUNCH SLIGHTLY TO INDICATE CTR. OF INTERSECTION OF ALL 4.200 \pm D. HOLES (SEE CRITICAL REQUIREMENT NOTE ABOVE)

11 HOUSING
 MAT'L - ALUMINUM 6061
 1 REQ'D

PIECE NO.	QUANTITY	DESCRIPTION

NATIONAL BUREAU OF STANDARDS
 QUANTUM ELECTRONICS DIV., BOULDER, COLO. 80502

DETAILS
 FOR MICHELSON LASER CAVITY

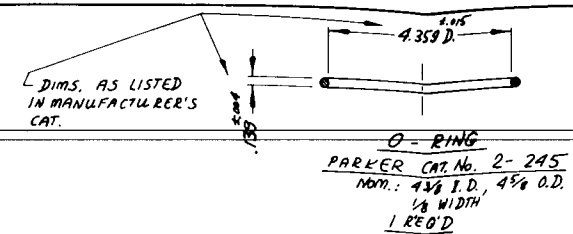
MODEL I
 DIMENSIONS IN INCHES
 TOLERANCES
 DECIMALS .005
 FRACTIONS .015
 ANGLES .015

DESIGNED BY: VICTOR LECHE
 CHECKED BY: DR. K.A. EVERTON
 APPROVED BY: J.S. WELLS

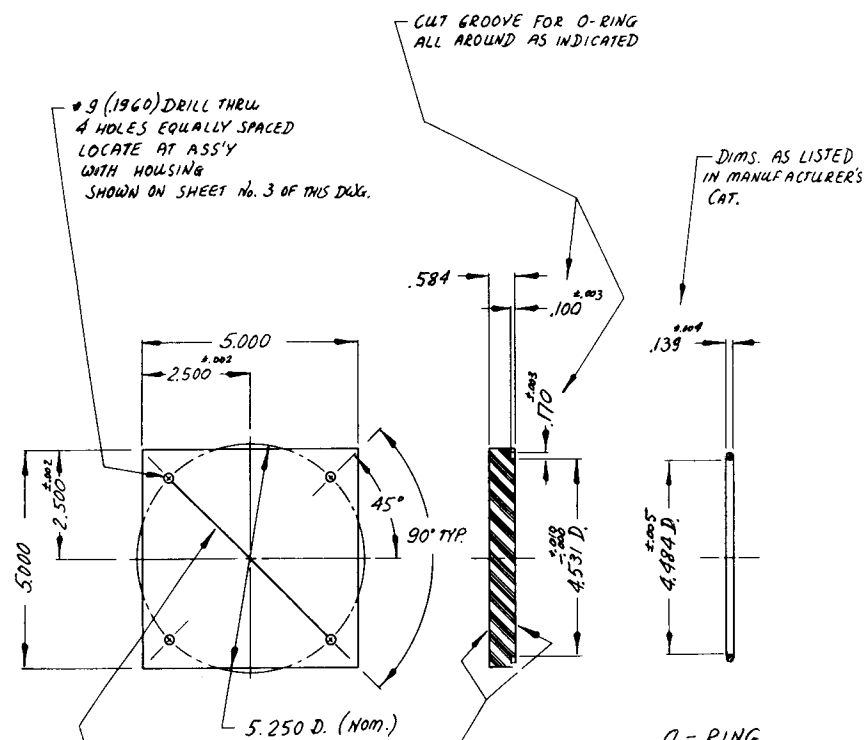
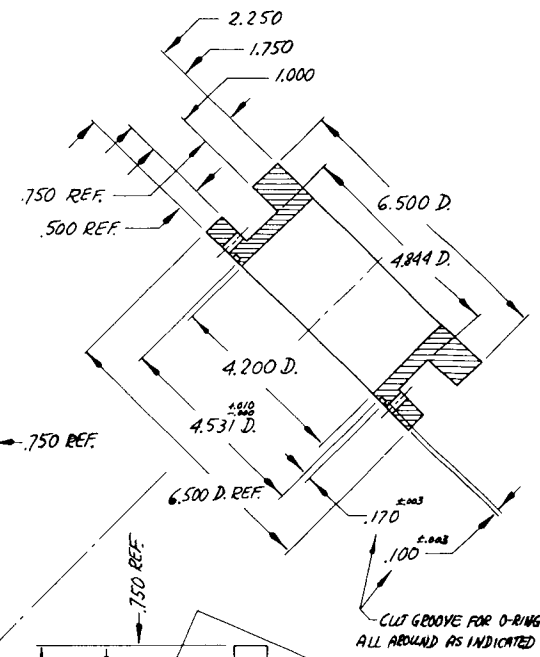
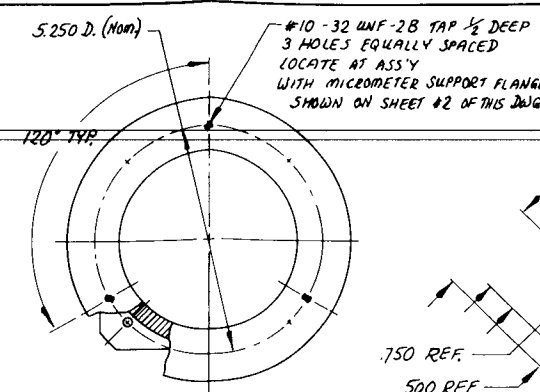
DO NOT SCALE THIS PRINT
 THIS PRINT ISSUED 27/102

APPROVED BY: [Signature]
 DATE: 12-1/343D
 SHEET 3 OF 6

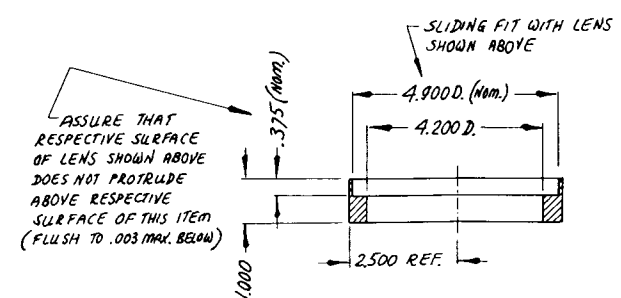
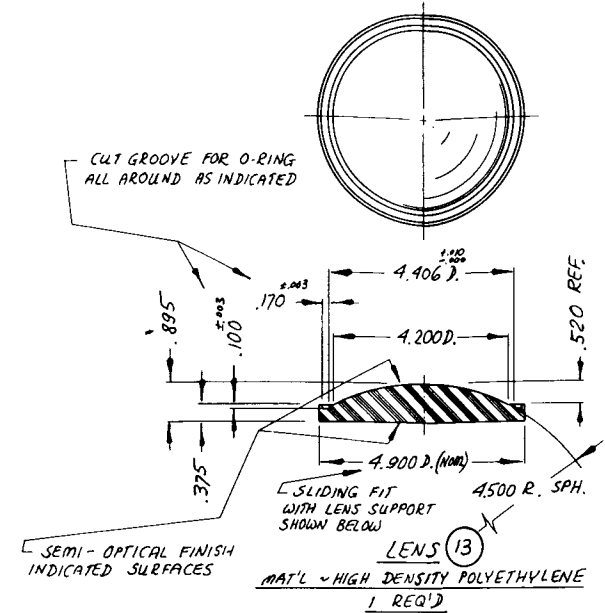
ORIGINAL DATE OF DRAWING		
NO.	DATE	REVISIONS



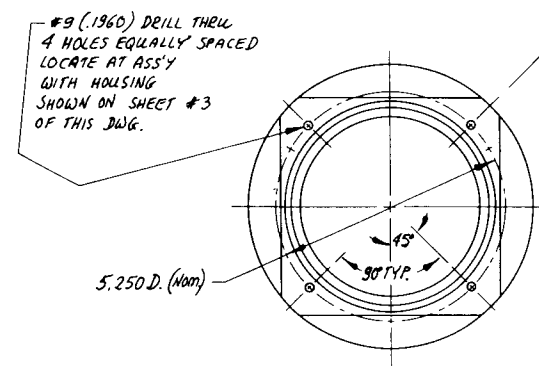
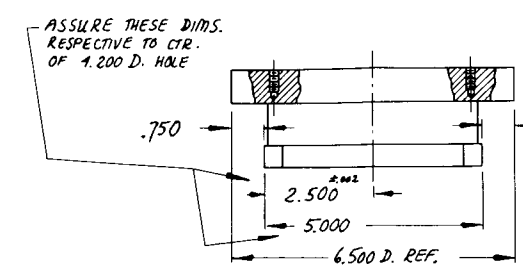
O-RING
PARKER CAT. No. 2-245
Nom.: 4 3/8 I.D., 4 3/4 O.D.
1/8 WIDTH
1 REQ'D



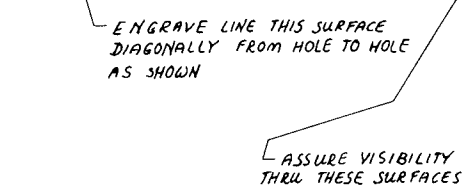
O-RING
PARKER CAT. No. 2-246
Nom.: 4 1/2 I.D., 4 3/4 O.D.
1/2 WIDTH
1 REQ'D



LENS SUPPORT FLANGE
MAT'L - ALUMINUM 6061
1 REQ'D

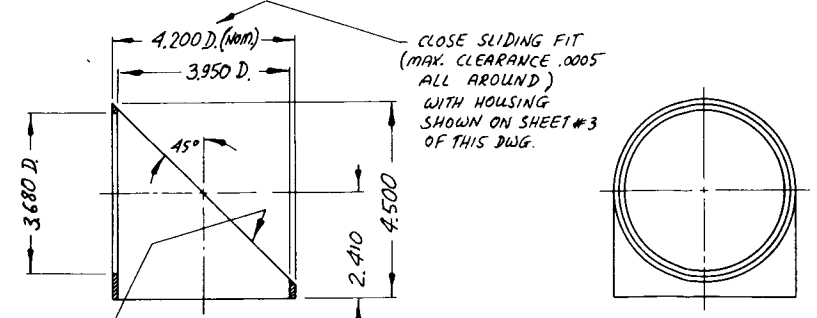


COLLAR (15)
MAT'L - ALUMINUM 6061
1 REQ'D

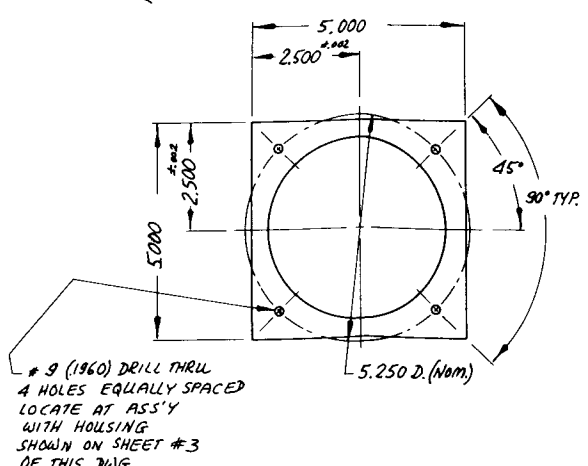


TRANSPARENT MIRROR SUPPORT (14)
MAT'L - ALUMINUM 6061
1 REQ'D

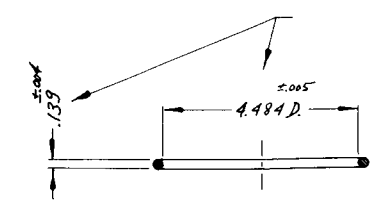
WINDOW (10)
MAT'L - LUCITE
1 REQ'D



TAP THIS SURFACE FLAT CEMENT TRANSPARENT POLYETHYLENE MEMBRANE .001-.002 THICK ASSURE FLATNESS (NO DISTORTION OF SEMI-REFLECTED IMAGE)



LENS SUPPORT FLANGE (12)
MAT'L - ALUMINUM 6061
1 REQ'D

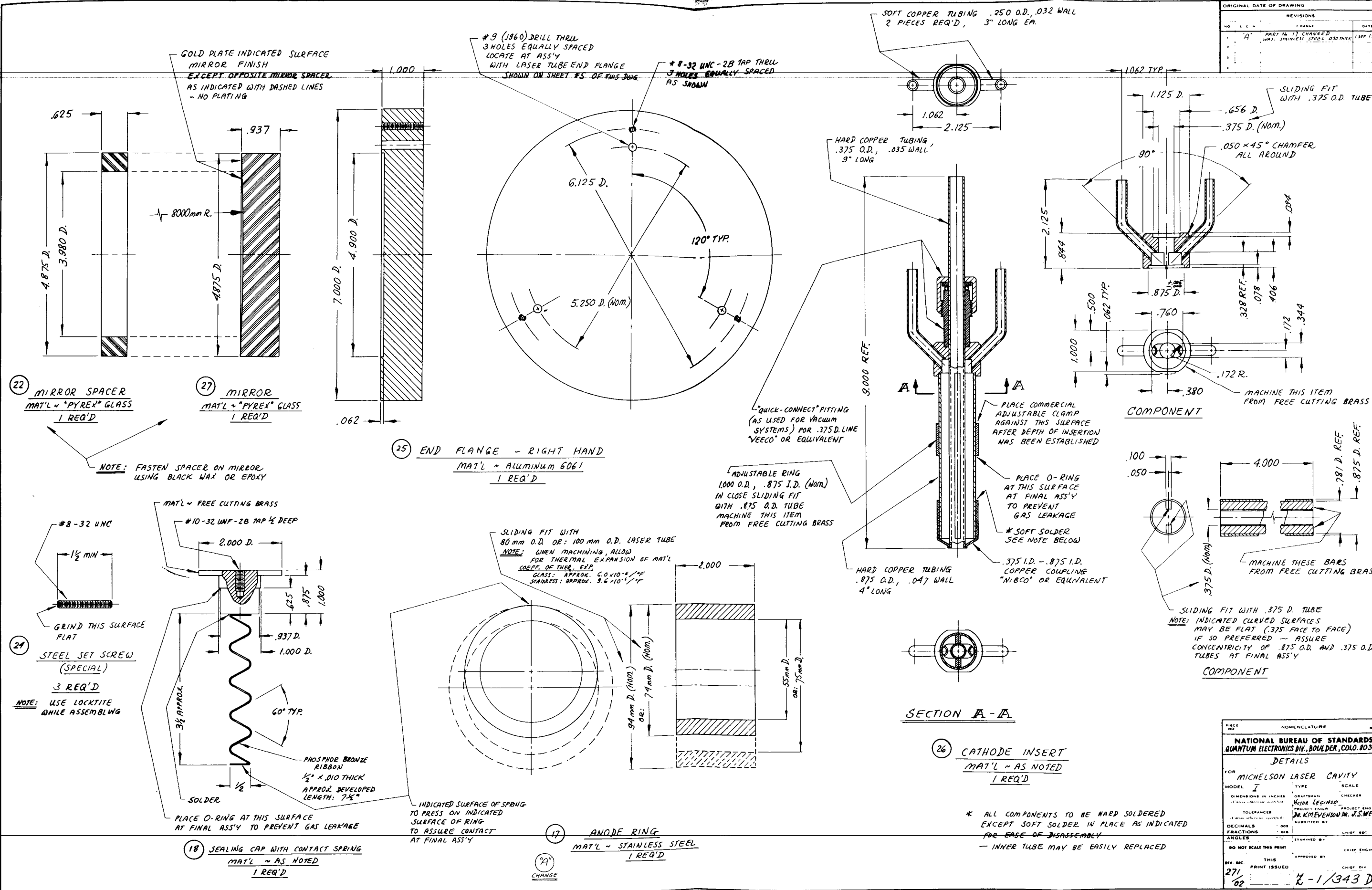


O-RING
PARKER CAT. No. 2-246
Nom.: 4 1/2 I.D., 4 3/4 O.D.
1/8 WIDTH
1 REQ'D

PIECE NO.	NOMENCLATURE	NO. REQ'D

NATIONAL BUREAU OF STANDARDS QUANTUM ELECTRONICS DIV., BOULDER, COLO. 80502		
DETAILS		
FOR	MICHELSON LASER CAVITY	
MODEL	I	TYPE
DIMENSIONS IN INCHES		SCALE
TOLERANCES		CHECKER
DECIMALS	.008	PROJECT ENGR
FRACTIONS	.015	PROJECT ENGR
ANGLES		AUTHORIZED BY
DO NOT SCALE THIS PRINT		
BY SEC		APPROVED BY
THIS PRINT ISSUED		
27/62		

ORIGINAL DATE OF DRAWING		REVISIONS	
NO.	DATE	CHANGE	DATE
1		PART NO 17 CHANGED MATERIAL STAINLESS STEEL .030 THICK	1 SEP 1971



PIECE NO.	NOMENCLATURE	QC NO.
	NATIONAL BUREAU OF STANDARDS QUANTUM ELECTRONICS DIV., BOULDER, COLO. 8030	
DETAILS		
FOR MICHELSON LASER CAVITY		
MODEL I	TYPE	SCALE
DIMENSIONS IN INCHES		
DRAFTSMAN: VIKTOR LECINSKI		CHECKER:
PROJECT ENGR: DR. K. MEYERSON		PROJECT ENGR: DR. K. MEYERSON
TOLERANCE: .005		SUBMITTED BY: DR. K. MEYERSON
DECIMALS: .005	FRACTIONS: 0/16	EXAMINED BY:
DO NOT SCALE THIS PRINT		
APPROVED BY:		CHIEF ENGINEER:
DIV. SEC. 271	PRINT ISSUED: 02	CHIEF DIV:
		2-1/343 D
SHEET 6 OF 6		